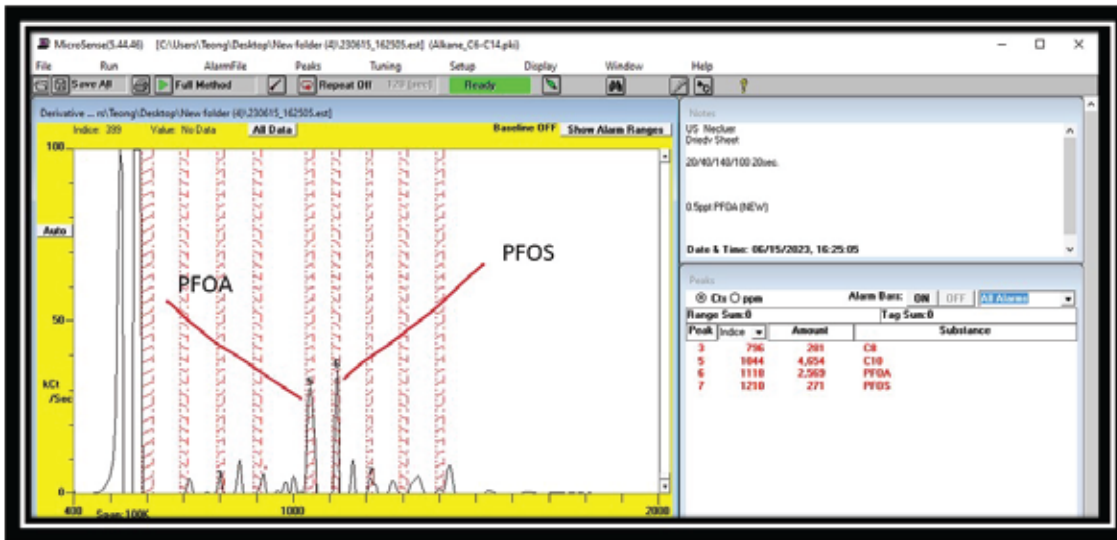


PFAS and Chemical Portable Fast Gas Chromatograph System

Model: PFAS-TA-F

The PFAS and Chemical Detection System Explained

Sheet of AEM membrane
(20.40.140.100 Pump 10sec) Weight 364mg slice



Weight is AEM Membrane: 364mg slice — Heated to 32 degrees C
The graphic shows that there is PFOA and PFOS present

Unique Detection

- Recognizes full chemical signature
- Provides a complete chemical profile
- Has an expandable library of 700+ chemical signatures
- Ultra-high-speed chromatography
- Same time pattern recognition and trace detection
- Adapts and learns to recognize threat signatures



**TECHNICAL ASSOCIATES
OVERHOFF TECHNOLOGY**

7051 ETON AVENUE, CANOGA PARK, CALIFORNIA 91303
PHONE: 818-883-7043 | FAX: 818-883-6103

SALES@USNUCLEARCORP.COM | TECH-ASSOCIATES.COM | USNUCLEARCORP.COM

DIVISIONS OF
 USNUCLEARCORP
OTCQB-UCLE