

Particulate, Iodine and Noble Gas Replacement Detectors

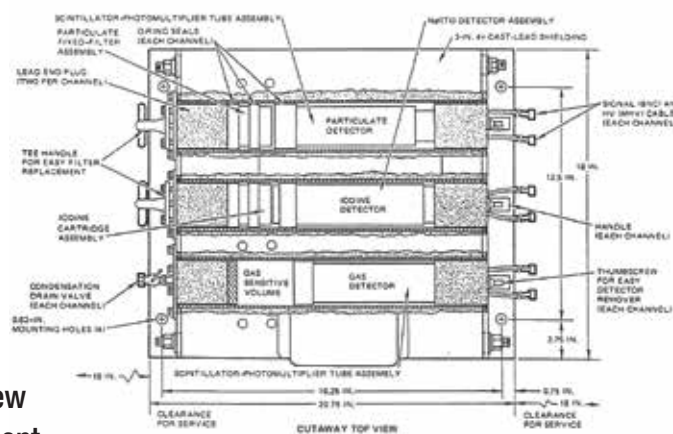
For RMS Air Monitors. Models: RD-60 and RD-60HT

Specifications Detector Dimensions:

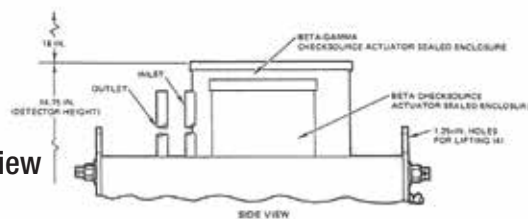
Particulate Beta:	2" Dia. (5 cm) x 0.02" (0.05 cm) thick Beta phosphor coupled to PM Tube
Iodine Gamma:	2" Dia. (5 cm) x 2" (5 cm) thick NaI(Tl) spectrometer grade crystal Optionally doped with Am ²⁴¹ Optically coupled to 2" Dia. photomultiplier tube
Noble Gas Beta:	2" Dia. (5 cm) x 0.02" (0.05 cm) thick Beta phosphor coupled to PM Tube
Sample Temperature:	35° to 120° F (2° to 49° C)
Electrical Connectors:	(1) High voltage – MHV ~ Teflon Insulated Co-axial connector (1) Signal BNC ~ Teflon Insulated Co-axial connector
Output Pulse Rate:	101 to 107 cpm
Operating Voltage:	700 – 2000 VDC
Check Source:	Suitable for use with 0.03 to 0.01 µCi Cl ³⁶ and 8µCi Ba ¹³³ check sources
Shielding:	Typical: 3 inch lead follower (or longer if required) at probe handle end
Shield Temperature:	RD-60HT: 150° F (65° C)

Additional RMS System Replacement Parts Supplied By Technical Associates:

Detectors:	RD-2 to RD-72, Including: Scintillators, Ion Chambers, Solid-state and GM Detectors
Filters:	Discs, Charcoal Cartridges, Spools, Filter Drives, etc.
Circuit Cards:	Amplifiers and Others
Pumps	
Power Supplies:	Low Voltage and High Voltage as required



Cut Away Top View
Detector Placement



Cut Away Side View



TECHNICAL ASSOCIATES OVERHOFF TECHNOLOGY

7051 ETON AVENUE, CANOGA PARK, CA 91303
PHONE: 818-883-7043 | FAX: 818-883-6103

SALES@USNUCLEARCORP.COM | TECH-ASSOCIATES.COM | USNUCLEARCORP.COM

DIVISIONS OF



USNUCLEARCORP

OTCQB-UCLE