

Computer HUB for Multi-Detector Systems

Model Series - FM-9HUB-2, FM-9HUB-10, FM-9HUB-MULTI

Specifications

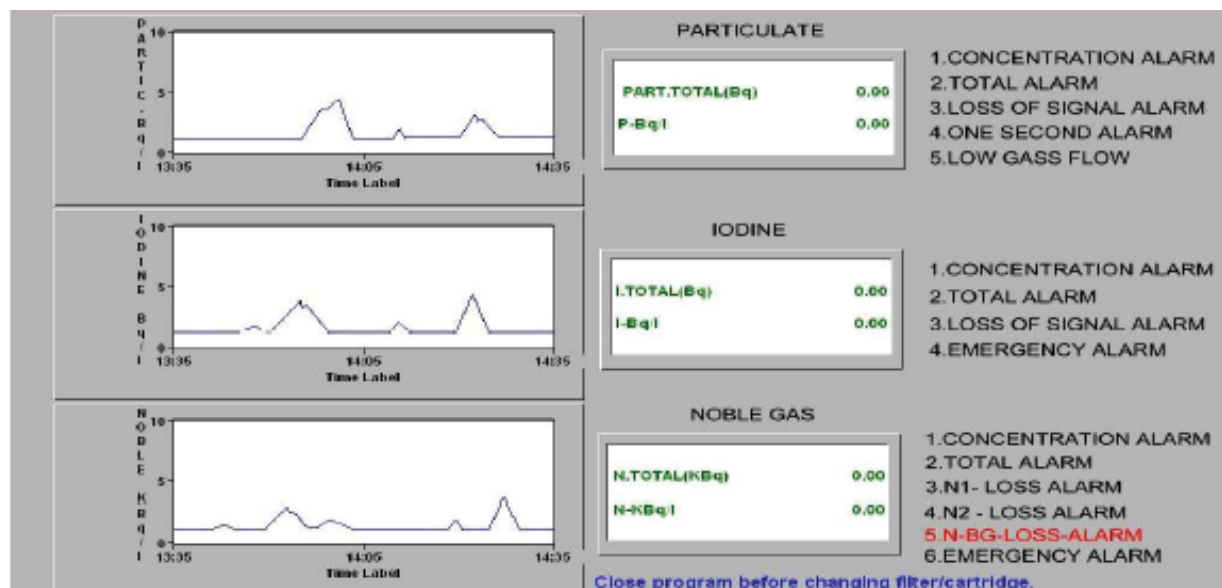
	FM-9HUB-2	FM-9HUB-10	FM-9HUB-MULTI
Channels	Two Channel Monitors	Three to Ten Channel Monitors	More than Ten Channel Monitors
Application ~~~~~ Use	1 – Doorway, Hand, Shoe Monitors 2 – Air Monitors	1 – Water Monitors 2 – Air Monitors 3 – Lab Monitor Networks	1 – Area Monitor Networks 2 – Perimeter Systems
Display	7" Color Monitor	17" Color Monitor	17" Color Monitor

Calibration: Follow on-screen instructions for user-assisted automatic calibration.

Display Mode: Model **FM-9HUB** features an advanced Processor Computer with a Color LCD Monitor.
Direct readout in desired radiation units Bq/l or other units such as KBq or Curies, etc.

Operation

Example: When **FM-9HUB-MULTI** continuous air monitor is in normal operation, the Color LCD Monitor displays:



**TECHNICAL ASSOCIATES
OVERHOFF TECHNOLOGY**

7051 ETON AVENUE, CANOGA PARK, CA 91303
PHONE: 818-883-7043 | FAX: 818-883-6103

SALES@USNUCLEARCORP.COM | TECH-ASSOCIATES.COM | USNUCLEARCORP.COM

DIVISIONS OF



USNUCLEARCORP

OTCQB-UCLE